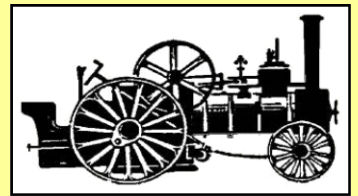


A Wisp STEAM SUPREME OF



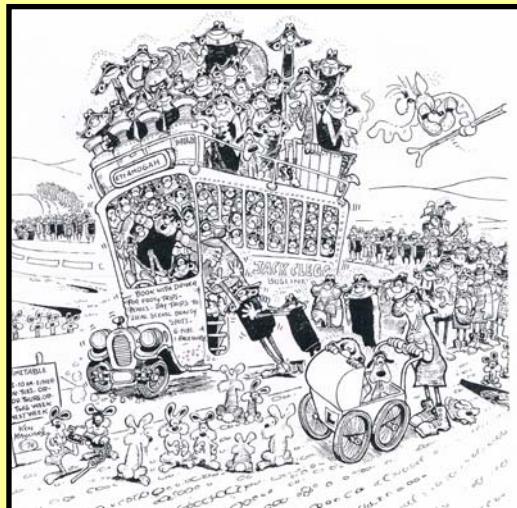
Extracts from the Melbourne
Steam Traction Engine Club
Newsletter



the new Boiler is HERE



Cosplayers on Stuart tank at MSTEC



Ettamogah follow up



Club Bulldog at Whiskey Wine and Fire Caulfield



STOP PRESS

On 6 August Neil Meyers excitedly emailed that the new boiler for the Franklyn Flyers had arrived from the UK on Monday morning and he has unloaded it into Shed 7.

Rohan Lamb arrived later that day and opened it up to have a look but left it in the shipping box so it can be easily moved.

First glimpse of the unwrapped boiler still in its UK shipping box

Railway Manager Rob Worland then filled in some details for us. Rohan Lamb produced the engineering drawing and technical specification for the boiler, to the Australian Standard. Also, he negotiated the approval by our boiler inspector of this British made boiler. Rohan is chasing the paperwork for the British certification of the boiler for public operation. The firm who made the boiler and arranged for certification did not pay the inspection fee. This is expected to be sorted out quickly but we will have to pay the fees since they have folded.

At the Social Meeting Rob made it clear that despite Ray Bedford and Frank Hedges spending hundreds of hours fully reconditioning the engine and motion work, including rrmaching many new parts, a lot of work is still required to fit the boiler and complete the reconditioning of the Franklyn Flyer.

Just an example of one of a pair of new expansion links Ray and Frank made for the Flyer. Many hours were spent making a special swinging fixture to mill the curved slot out of blocks of solid steel. Steam Supreme 608 Sept 2021



Since Ray's changed circumstances and the passing of Frank it is felt this is better carried out at the club. To this end a temporary work area with gantry and trestles has been set up in one of the South bays of the oil engine area in shed 11 and the loco running gear returned to the club from Rays workshop.

While the managing of the project will be in the hands of Rob Worland, Ray Bedford still wishes to assist with the project through to completion. Also, Rohan Lamb would like to participate in the engineering of the paths for the flow of hot gasses through the boiler. (Ash pan, fuel grate, blast pipe, petticoat and steam lines.) as it is felt that the old arrangement would be an

impediment to achieving maximum power capacity from the new boiler.

Ray Bedford then provided an outline of the work still needing to be done to the loco chassis since the new boiler is of improved design and construction to the original it is not just a drop in.

A new Work Area has been set up, with gantry and trestles, were boiler and chassis can be worked on. This has been arranged in the oil engine shed south bay by Peter Jackman.

Here is an outline of the work that Ray Bedford envisages needs to be done to get the little loco back in service *cont.*

THE NEW BOILER HAS ARRIVED



The new boiler chocked up for fitment check of cabin and smoke box.

Left the reconditioned chassis and running gear completely assembled.

Major Activities to get fit the New Boiler

Firebars new castings and design for mounting required.

Ash Pan improved design and fabricate , possibly raise boiler about 25 mm to improve draft and facilitate cleaning . This will involve new boiler mountings

Smoke Box , arrange attachment for the new one that came with the boiler, cut apertures for blast pipe , chimney and steam lines to cylinder.

Regulator Valve and control linkage explore externally mounted arrangement for better accessibility than the original internal one provided.

SmokeBox door and ring , fabricate suitable parts .

Plumbing revised layout as feedwater inlet is now on the side of the barrel, rather than fire box, to reduce thermal gradients

Forward and Reverse linkage redesigned to package around the boiler .

Cheers Ray Bedford

Comments . It is clear that even though Ray and Frank have spent hundreds of hours putting the locos running gear in to better condition than original , a lot of assembly work is still required before the loco will be back in service .

When this is completed we will have one of the finest fleets of 12 inch gauge locomotives in Australia. What an achievement ?

Just a shame Frank Hedges recent passing means he does not get to see the fruits of his labour but everyone can get great consultation in that his efforts will live on in the name of the engine ... Franklyn Flyer

S S S S S S S S S S S S



KL Bulldog and Britannia on display near front of Caulfield race course. The facing neighbouring apartments must of loved the constant toots of whistles all night. Aaron Morris

Aaron Morris reports *The club once again had a display at the Whiskey, Wine and Fire festival held at Caulfield Racecourse. The event hasn't been held since the covid period and redevelopment works.*



The event was held during the evening, nights from Thursday to Sunday. There was many distillery and wine merchants showcasing their produce to the public who enjoyed their night out. There were many fire pits scattered around the event some in old car shells utilising the engine bay, smoke machines and LED lighting inside the car body itself for visual effect.

The clubs display consisted of the clubs newly acquired Britannia portable and the clubs KL Bulldog. These arrived at the race course earlier on week thanks to Neil and Brenton for assisting in loading and unloading.

← *Our display being set up in the area behind the Grandstand*



← The 2 units had LED lights placed underneath them each night. →



The portable brought out the public's inner child, with many wanting to have their picture taken as they blew the whistle .



The bulldog tractor thumping and bouncing away into the evening also created much interest with some explaining to their friends that grandfather had one of these. Or others got up on the seat posing for a picture.



I hope the apartments windows across the road were double glazed.

Saturday and Sunday night Greg V and Spiros had come prepared with ham and cheese sandwiches cooking them in a jaffle iron on the portables fire.



Greg making Toastys →
← Spiros cooking them in the steam engine .



↓ Stall Holders showcasing their product to the punters who were eager to enjoy a sample ..or 2 .



As well there was blacksmithing displays to fit in with the fire aspect of the event.

The racecourse also had lunch room facilities available for use for exhibitors. The clubs refurbished room is on par with these facilities.

Thank you to all who contributed time to help out. It was an eye opener for myself as to how much time it can take to participate in an outside event . Aaron Morris with acknowledgement to Greg V . Well done to the MSTEC participants

Ps Feedback from our "Steam Burger " vendor indicated quite a few of our visitors on our July RunDay came as a result of our Whiskey , Wine and Fire display .

Follow Up on the

ETTAMOGAH PUB

This certainly generated some readers feedback , obviously bringing back pleasant memories of simpler times.

Below is what I have been able to garner from the responses and the internet . One thing for sure is Ken was obviously quite a legend in his time

Ettamogah Pub Cartoons The original creator of the series was Ken Maynard. Ken was born in 1928 in Albury on the New South Wales and Victoria border and loved the bush and open spaces just north of Albury locally known as Ettamogah. He was educated in schools in Albury and worked locally until he left at the age of 23, to join the Victorian Police Force. Ken later became a traffic cop directing traffic on the Corners of Flinders and Kings street where he would encounter the coming and going of all the workers so as he became widely known they would wave and call out to him in a demonstration of the Australian Larrikinism which he loved. That's where he got the idea of capturing , in cartoon form , the atmosphere of locals gathering around a pub. Ken's first work was published in the Victorian police journals where he remained as a contributor for ten years.

He got his break as a cartoonist in 1958 after submitting a batch of rough drawings to the Australasian Post a long running weekly magazine . These were published under the title Ned and his Neddy. The early cartoons featured a stockman with an overloaded horse at the principal character. Over the years however, the "Ettamogah Pub" began to appear more and more in the cartoons and Ned and his Neddy gradually slipped into the background. These cartoons became a main feature of the magazine and ran until its last edition in 2000 . He must have been a sharp observer so was never short of an enormous amount of material based on blokes getting together for a drink and a smoke. Ironically, Ken Maynard never drank or smoked. Acknowledgement Travellers travel news on the internet.

A cartoon of the imaginary Ettamogah Pub. Ken Maynard



The Original Real Pub was built in 1987 by businessman Lindsay Cooper just as it was originally drawn in the famous Ken Maynard comics. The aim was to create a themed family restaurant that would supplement some tourist attractions in the Table Top district just north of Albury .

The pub stands at exaggerated, wacky proportions with its sloping walls and distinctive architectural style complete with bull nosed veranda and 1927 Chev truck stranded on the roof . According to Ken it was washed up there during as bit of a flood and the locals never got round to getting it down .

The fun Aussie theme continues both inside and out with a sleeping guard dog out the front a crashed airplane in the garden and lots of quirky signs and decorations.

It is still there today and an amazing place to explore and a great stopover on your travels just up the highway from Albury . Reportedly there is a grassed oval out back and outdoor facilities including running toilets and a shower block. The grounds are suitable for those caravanning through to pitching a tent or rolling out a swag for just a small fee payable at the front bar of the adjacent Table top Hotel . Internet

Bill Dazenko called in to see it after reading about it in Steam Supreme and advises it is now a bit low key since being bypassed by the Hume highway but reports it is still an interesting place to stop for a break .

As its is today internet pic



Ettamogah Trivia

Ettamogah is the Aboriginal name for the area chosen to build the pub and means a good place for a drink . Also if spelt backwards and said fast it actually sounds like “ how go matey “ . Give it a try it might be true or just a product of Ken’s sense of humour .

Several other Ettamogah pubs have been built around the country to capitalize on the popularity of the cartoon series but apparently not all with Ken’s permission .

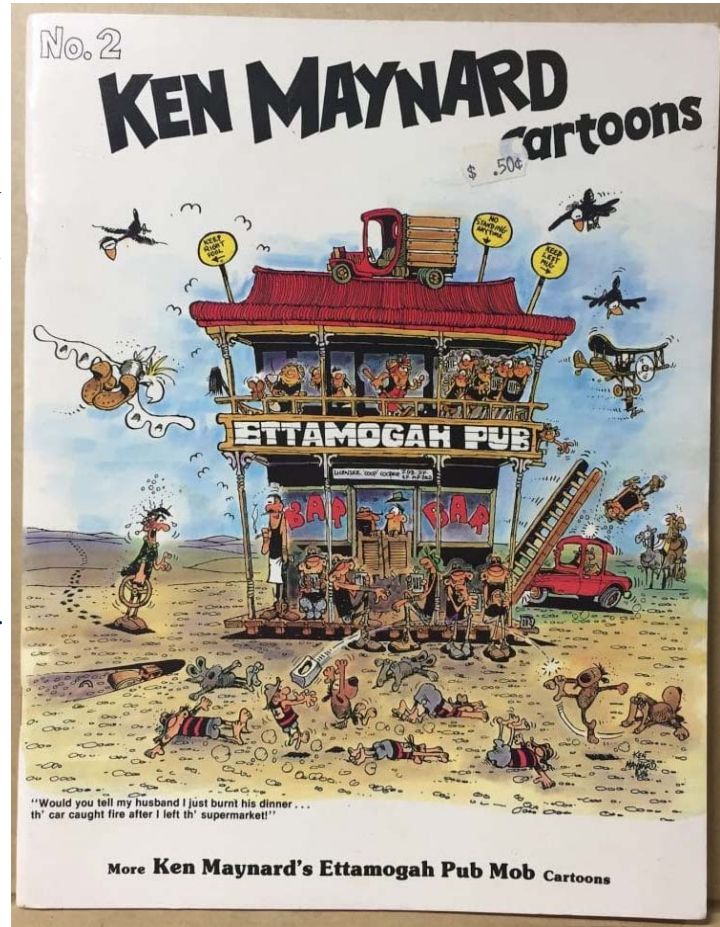
Ettamogah Cartoons

Over the years Ken produced a great number , some even printed in Wodonga , which were extremely popular in their day and still still available on flea buy . There is Ettamogah Cartoon books 1, 2 & 3 , The Ettamogah Collection , Tales from the Ettamogah Pub and Ken Maynard cartoons 101 to 164 . They go for between \$20 to \$ 30 plus \$ 15 postage. As well there are individual images for around \$10. People have a lot of fun with theses and spend a lot of time searching out the details in the cartoon then come back a bit later only to find some more.

Notice the cleaning lady bailing up the terrified blokes on the balcony !

The Engine in the Cartoon

Now as for the identity of the steam engine in last months SS . I mentioned to Wodonga boy Roy Odgers if he knew the Albury engine and I got all excited when he said it had been in store at Leneva Border Steam and Oil Engine Club for the last 20 years . Prior to that it had spend many years in a park in Albury before becoming embroiled in a bun fight following an attempt to remove it from it’s district for preservation elsewhere. Common sense prevailed and it ended up with the club at Leneva .



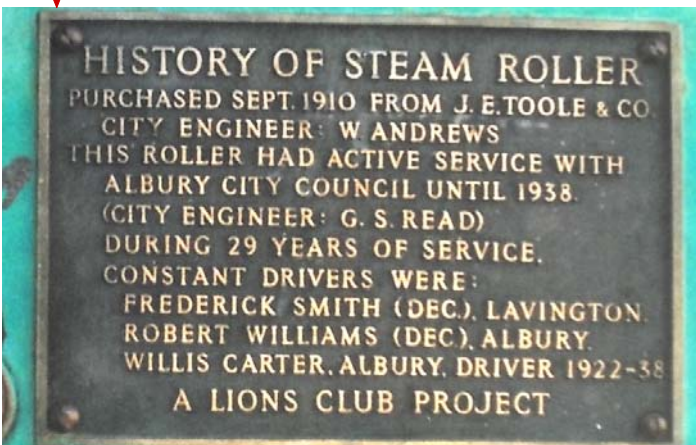
← *The roller photographed in the Bilson Park Albury 26/1/1961 . Photo by Emilie Badavy ?? On display at Leneva*

I had been to their 2021 Easter Rally and inspected a dismantled engine undergoing extensive restoration . Remembering a few pics I dug them out excitedly only to see it was a Steam Roller where as the Ettamogah engine is a Traction so it cannot be the engine in the cartoon.

The Albury roller under restoration at Leneva in 2021 . I am told it is a bit more advanced now . Warwick pic



↓ *Plaque giving roller history now on display at Leneva*



Traction Engines in the District

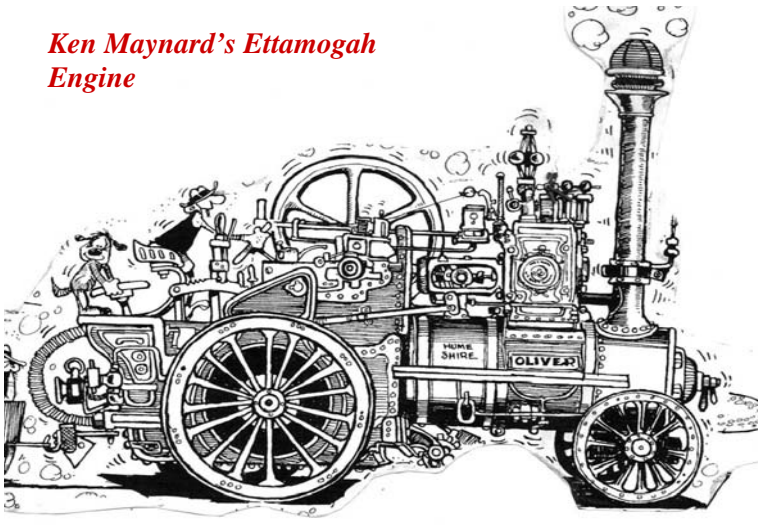
Referring back to the Trove newspaper article of Friday 24 March 1911 says the Hume shires engine is definitely a traction engine from England with an independent scarifier and 6 road trucks made locally . It goes on to explained when stone is crushed at the quarry it will be loaded onto the trucks by the elevator and taken away onto the roads by the traction engine.

Much more modern and complete than the plant owned by the Albury council whose scarifier is attached to the traction engine .

So the municipality had at least 2 traction engines and a roller but no clue about the Ettamogah one.

As a last result I trawled through engine pictures on the internet and found this picture of a 1920 Ruston Hornsby which matches in many small details

Ken Maynard's Ettamogah Engine



Internet Ruston Hornsby



Comparing pics , controls such as reversing lever , throttle and string for blowing the whistle is the same . Steering gear worm is in the same place .

Whistle, governor and safety valves on the steam chest are in the same positions . Similar trunk guides , spectacle plate and gear guards .

For this much fine detail to match on what is just a cartoon it cannot be coincidence so I say it is a Ruston that Ken must have had some involvement with or knew .

Warwick Bryce acknowledgements to John Horwood , Bill Dazenko , Bill McRobb, Rod Odgers

SS SS SS SS SS SS SS

Around the Club



The big Schaerer Lathe being guided by Andrew Fairweather and Peter Morris into the rear of bay 5 .

Brenton pic

Lathe Move by Aaron Morris

The recently donated lathe has been moved from the door way of bay 2, into the concrete area in the back of bay 5. This involved pre planning before the lathe could be moved. This area had a lot of items left from the meeting room clean out. So reorganisation was required this was done over 3 Saturdays by Andrew , Brenton, Josh, Des and Aaron.



Most of the filing cabinets were placed and strapped onto forklift pallets to confine their foot print and make them easy to shuffle around. A lot of the small engines and other items were placed on suitable pallets then stacked on to the pallet racking installed by Rob Hull and Don Atkinson. This helped create more floor space while other items were place in bay 4 . For the lathe to be moved it required the majority of bay 5 to be cleared to allow crane access this was a big task moving all of the now palletted items out . Plus other items including the hydraulic press.



Brenton amazed at seeing so much of bay 5 floor Andrew pic

The clearing out started at 10:00 with the final items being put back in under lights at 7 in the evening.

The best work goes un noticed. The lathe sitting in it new spot after all of the items have been returned inside at the end of day Andrew pic



Steam Shovel While waiting for the steel and sandblasting John Meade , Josh Davies and Laurie Hall have lifted the floor to get at the linkages . It is now all freed up and working and the engine turning over.



As much as possible has been done to the cabin frame and now it is ready for some painting ... Any volunteers ?, even younger members, and we will get in paint and materials .

Visitors Enjoying Themselves around the club . Aaron recently snapped these pics of our visitors .

It is the type of image that would be good on a general flyer as it shows us to be a nice to bring the kids to for some fun .





COSPLAYERS

There have been some shady characters lurking around our machinery lately . Apparently nothing to worry about just COSPLAYERS , whatever they are ? If you are like me and do not know, this is what I garnered from talking to them and searching the internet

Cosplay is a blend of the words Costume and Play and is an activity in which participants wear costumes and fashion accessories to represent a particular character in role playing that is being performed away from a stage.

The subjects being played are usually imaginary characters from cartoons , comics books, tv series, and popular video games but even extends to rock stars, science fiction participants and often historical characters

The modelling can take place at public adverts and is often a draw card for photographers , professional and amateurs. It is usually a series of posed shots rather than engaging in continuous play .

Often they are run as private events were like minded people can enjoy their passion for dressing up and professional photographers can take high class images to

exhibit their skills online and possibly sell their images.

Photography is a big part of cosplaying →

Costumes and Props are a major part. Many go to great trouble to tailor their own costume as they feel it is important to be instantly recognized as their favourite character . For those not in a position to make their own costumes there is a great range of the popular ones and accessories available on the internet .

Context is the other important criteria the characters must be portrayed in the right setting. Space themes are likely to included rockets , space suits and tazer guns as props . Steampunks ,



on the other hand , look for vintage machinery and steamy atmospheres . Military themes of course benefit from detailed amour and weapons appropriate for the period and , if in the last 100 years, use of appropriate Army vehicles will be sort .

← *Japanese cartoon characters off to battle in what is a very accurate representation of a fully equipped British Ferret Scout car .*

Compare it to Neil's We can hardly wait till it is going . →

Particular Styles , with fans from all over the world attending conventions and conferences it has become apparent different countries



have developed individual styles . The classic one being based on stark American TV cartoons and video games in comparison to the colourful Japanese animated characters, known as Anime with their energetic movements , expressive large eyes and small mouths along with elaborately detailed and animated supporting props.

Girls unt Panzer (Tanks) is one of the most popular Japanese video franchise . This depicts a competitions between 2 Japanese , present day , girls high schools were tank warfare is practiced as a sport ! The story takes place in an imaginary world where historical World War 2 era tanks are maintained in full working order specifically for sports style war competitions between the schools . (the mind boggles) This become really serious when it is leaked that the loosing school will be closed down !



Japanese Attention to Detail has ensured great trouble has been taken to make the tanks as realistic as possible even to the extent of the different makes being recognizable. Old proper gander and war movies of real tanks going over obstacles have been studied to mimic distinctive track and suspension movement for the various makes of tanks .

A damaged track coming off video snapshot →

Also particular attention has been paid to the correct path followed during skid steering at high speed as much of the digitized footage features exaggerated speed and height of jumps . If that is not enough over 40 different American , British, and most curiously , Germany WW 2 tanks are accurately portrayed not only in appearance but in firepower and vulnerability . On the other hand a tank knocked out by a direct hit from a powerful opponent simply sends up a white flag rather than being blown to smithereens and everyone killed as is the reality.



This deliberate strategy not only satisfied the animators passion for tanks but greatly extends the audience of followers to include tank fans as well . So now you know what has been going on at Scoresey

Editors Comments

Panzer is the German word for tank , not tank model called Panther after the animal.

Why their fixation with German tanks ? This is understandable when you consider

- Japs never had much in the way of tanks of their own

- The Allies conquered them in WW2

- They were strongly allied with Germany during the World Wars. I was told by a Japanese colleague that , in the late 1800's, when they decided the way forward was to Westernize they choose to use Germany as their model so developed strong ties even to the extent of allying with them during the wars.

These 2 real girls with my real Stuart tank can be recognized as the same anime characters in the Ferret scout car cartoon previous page . Such is the power of Cosplay ! Warwick Bryce



SS SS SS SS SS SS SS

Junior(s) Matter(s)

A page for our younger members

Since Paula introduced this page a few month ago it has certainly paid off . The kids are getting to know who is who around the club and what projects are on the go . The older members are beginning to appreciate that these youngsters are our future and with a bit of instruction can actually do usefully work and speed up things while adding to the enjoyment of our hobby for everyone .

Please keep your mind out for potential projects that the kids can become involved in .

Greg writes we had some juniors working on the Steam Shovel on Sunday having a go at marking out , centre punching and drilling with the magnetic base drill . Warwick profile cut the radius and now the replacement floor plate for the left hand feed water tank is complete. This will now allow the blacksmiths to form the angle iron base for the coal box as soon as the material turns up .

Koby watches Greg instruct Spiros and his friend Joey on the operation of the magnetic base drill . Koby's mother keeps her eye on the boys from a discrete distance





← The old heavily corroded floor plate laid over the new one to check position of holes and cut outs . It was so buckled it had to be pulled down with G clamps and through bolts by the boys . Greg pic

The boys started their day by helping with the oiling up of the Bay 1 steam engines.



New Junior Engineer on LytteltonII



Runday Sunday 25th August, Josh Davies lubricated both Triple Expansion engines and Auxiliaries. We warmed the Port Engine and Josh started the engine. The boiler pressure was only 40psi so it took a few tries moving ahead and astern before it turned. He gave it a 10 min run. Josh also used the steam oil swabbing brush on the piston rods which helps lubricate the liners. Bill McRobb .

**MSTEC portable night steaming at Caulfield Racecourse Whiskey Wine and Fire festival .
Chris Glassock photo**

